

Roll Around Stand Plans

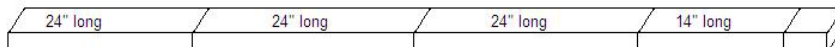
Before Starting you need to collect the following materials:

QTY	Description	Unit Cost	Total Cost
4 ea	2" x 4" x 92" pine stud	\$2.92	\$11.68
4 ea	3" swivel casters	\$4.00	\$16.00
8 ea	1-1/2" x 1/4" Lag Bolts for casters	\$0.17	\$1.36
8 ea	3" x 1/4" Lag Bolts for casters	\$0.25	\$2.00
1 box	1-1/2" fine thread drywall screws	\$4.11	\$4.11
16 ea	1/4" Flat Washers		\$0.85
	Total		\$36.00



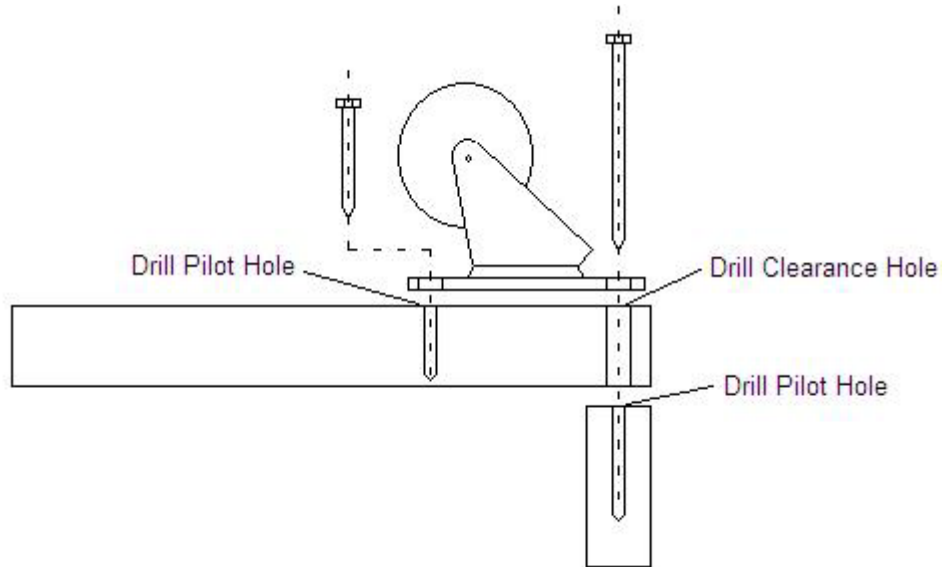
Before Starting you need to collect the following tools:

- Saw to cut lumber
- Screwdriver (preferably powered) to assemble stand
- Wrench to mount wheels
- Drill with bits for pilot holes



Cut each 2x4 up into three pieces 24" long and one piece 14" long.

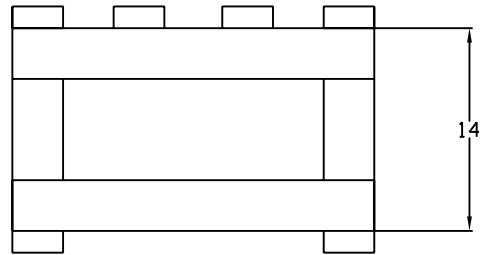
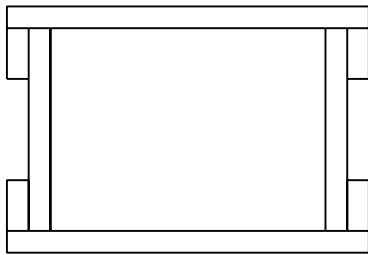
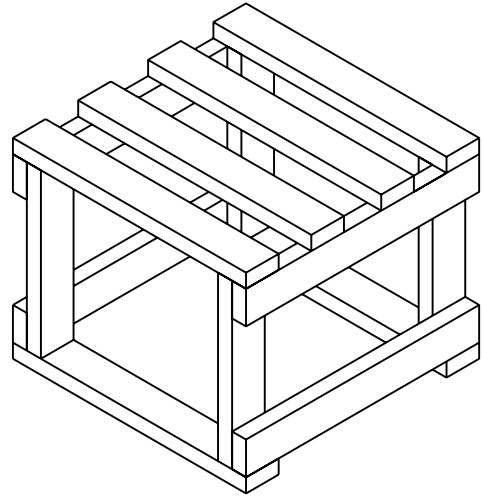
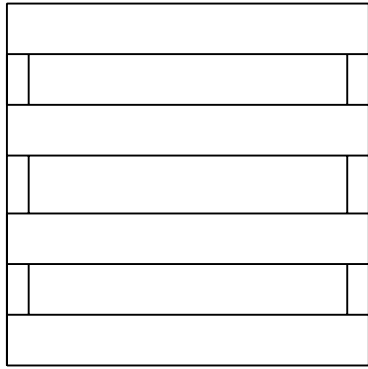
Assemble the base using 4 ea 24" pieces. Drill pilot holes for the lag screws. Use the long lag screws to hold the 2x4's and the wheel together and the short ones to mount wheel



Attach the 4 ea 14" boards as uprights using drywall screws.

Attach the top using drywall screws.

Leave the top two boards off until your ready to mount the tank.



WASH BARREL STAND